

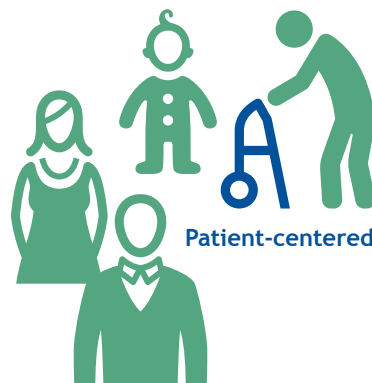
EMS 3.0

EMS can contribute to our nation's healthcare transformation by filling gaps in the care continuum with 24/7 medical resources that improve the patient care experience, improve population health, and reduce healthcare costs – this is "EMS 3.0."

HEALTHCARE IS TRANSFORMING

Our nation's healthcare system is transforming from one that rewards volume of care to one that rewards value, known as "Healthcare 3.0."

Outcomes and performance data



URGENT AND EMERGENT CARE REMAIN CORE TO EMS



24/7 emergency medical dispatch (911)



Rapid response, medical assessment and treatment



Urgent cardiac, stroke, trauma, mass casualty/disaster care



Emergency and critical care transport

BUT EMS MUST OFFER EXPANDED SERVICES



Nurse advice



Post-discharge follow up, preventive care



Chronic disease management and support



Alternative transportation or referral to community health or social services resources

EMERGENCY CARE + EXPANDED SERVICES = VALUE

EMS is uniquely positioned to support our nation's healthcare transformation by assessing and navigating patients to the right care, in the right place, at the right time. Let's move our profession to EMS 3.0.



Better patient health



Lowered costs

HOW EMS AGENCIES CAN DEMONSTRATE VALUE TO HEALTHCARE PROVIDERS AND PAYERS

- Recruit individuals to your EMS agency who understand and embrace the EMS 3.0 value proposition.



- Strengthen competencies in all professional levels within your EMS agency to ensure that it is ready to effectively provide the services that your community needs.



- Embrace continuous quality improvement and strive to adopt — pay for performance/value based purchasing — reimbursement/system funding linked to clinical outcomes.



- Utilize all opportunities to discuss how EMS 3.0 supports the healthcare transformation.



- Clearly articulate the types of services that EMS 3.0 can offer to improve patient outcomes and lower costs.



- Advocate for and support college-based education for EMS.



- Assess the potential for EMS 3.0 to benefit your community by addressing healthcare gaps.



- Use appropriate tools to measure effectiveness in improving patient outcomes and lowering costs.



- Integrate all services into a well-coordinated, medically directed and performance-measured EMS 3.0 package of services provided by professionals at basic and advanced levels.

